

Warren Wilson College • 2024

Student Life & Housing Guide





Can you believe it?

We are excited for you to join us!

It's wonderful you will be joining us this fall as a new student. The Student Life Team officially welcomes you to Warren Wilson College, where we know you will find many different ways to engage with students, staff, and faculty. Living in our residence halls and eating in Gladfelter Hall are great ways to meet so many folks in our community. We hope you find all the interesting and exciting places on campus to call your own.

We've created this packet to guide you through moving in the fall, highlight our activities, and help you learn more about campus. Included in this packet is important information for not only you, but your family members too, so please share it! Remember to fill out your forms and double check the deadlines on the New Student webpage:
warren-wilson.edu/new-students

If you have any questions about Student Life or any of the forms included here, please reach out. We can help make your transition a smooth and easy one. Please email us at **orientation@warren-wilson.edu** or call 828-771-3800.

Can't wait to see you in August!



Tacci Smith
Associate Dean of Students



Maddie Liberti
Director of First Year Experience

Welcome!

This packet contains a lot of great information. Here's an overview of all that we've included.

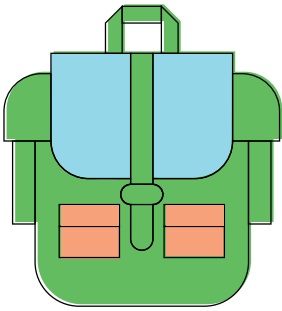
Tip: Review the entire packet before completing any of the forms. This way, you'll be totally prepared once you get started.

- 2 **STUDENT LIFE**
Clubs to join, things to do, identity support, and more.
- 4 **STUDENT WELL-BEING**
- 5 **HOUSING OVERVIEW**
Learn a little more about each of our residence halls here.
- 8 **ORIENTATION**
This is your official welcome to Warren Wilson!
- 10 **WHAT TO BRING**
- 12 **DINING SERVICES**
Hungry? Learn about our three different meal plans here, and select the one that works best for you.
- 14 **GET TO KNOW ASHEVILLE**
- 16 **HOW TO COMPLETE IMPORTANT FORMS**
Learn how to fill out and submit important forms, including the housing application and medical forms. The medical forms are required even if you do not intend to live on campus.

Student Life.

Pursue your passions and find new ones at Warren Wilson College!

Join one of our current student clubs, or create one of your own. Get involved, make new friends, and explore all there is to offer!

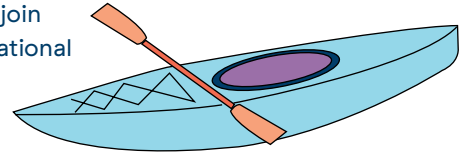


OUTDOOR PROGRAMS

Yep, we get outside. We offer a range of excursions including caving, camping, rock climbing, mountain biking, hiking, and white water rafting.

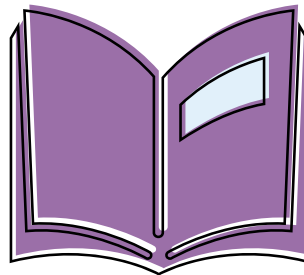
CLUB SPORTS

Get moving and join one of our recreational clubs: Paddling Club (kayak and canoeing), Climbing Club, Ultimate Frisbee, Ping-Pong Club, Skate Club, and Aerials Club.



STUDENT ACTIVITIES

We host bands, speakers, and movies on campus. We also coordinate open mic nights, arts & craft socials, video game competitions, game nights, dance parties, and more!



INTRAMURALS

Join the Athletics Crew for basketball, soccer, futsal, pickleball, ultimate frisbee, spike ball, corn hole, dodgeball, and volleyball!

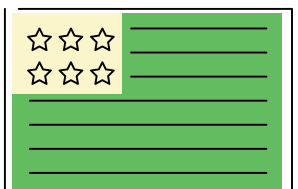
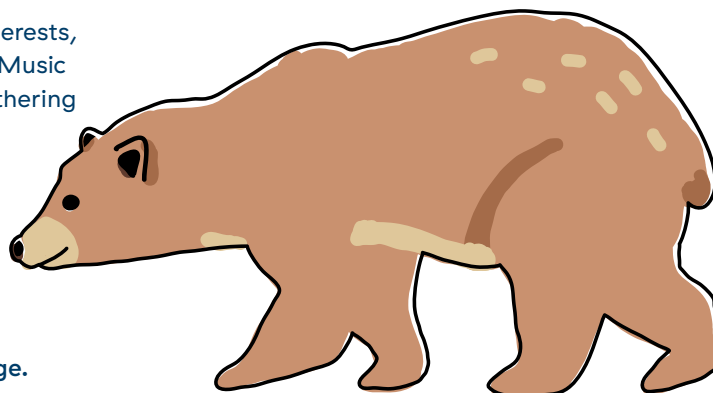
TRANSPORTATION

Catch a ride with Transportation Crew weekly to nearby stores and fun destinations. They can also help you get to your off-campus medical appointments.

STUDENT INTEREST CLUBS

Join a club based on your interests, such as: Mindfulness Circle, Music and Arts Club, Magic the Gathering Club, and The Forum (Philosophy Club)!

Club Fair will take place Wednesday, September 11, from 5–7pm in Canon Lounge.



STUDENT GOVERNMENT ASSOCIATION

Our students have a role in shaping campus policies.

Deepen Your Personal Philosophy.

Explore and celebrate your faith, spirituality, race, ethnicity, sexuality, and gender identity through our programming and support systems. All are welcome!

SPIRITUAL LIFE

Warren Wilson students observe many faith traditions. Spirituality and its rituals are meant to help us make sense of the world around us. Join us as we explore traditions that encourage us to see the worth within ourselves as well as the call to work together for a more just world for all living things.

INTERNATIONAL PROGRAMS

Come to the Study Away Fair in the fall, which highlights direct-exchange programs, faculty-led trips, external partners, and domestic options. It's a great time to see what options students have to study away.

WIDE

The Wilson Inclusion Diversity and Equity (WIDE) Office is devoted to creating and upholding a culture on campus that is sustainable, and the encouragement of individuals striving individually, collectively, and meaningfully towards intercultural ingenuity.

Opportunities with the Office of Inclusive Excellence (OIE)

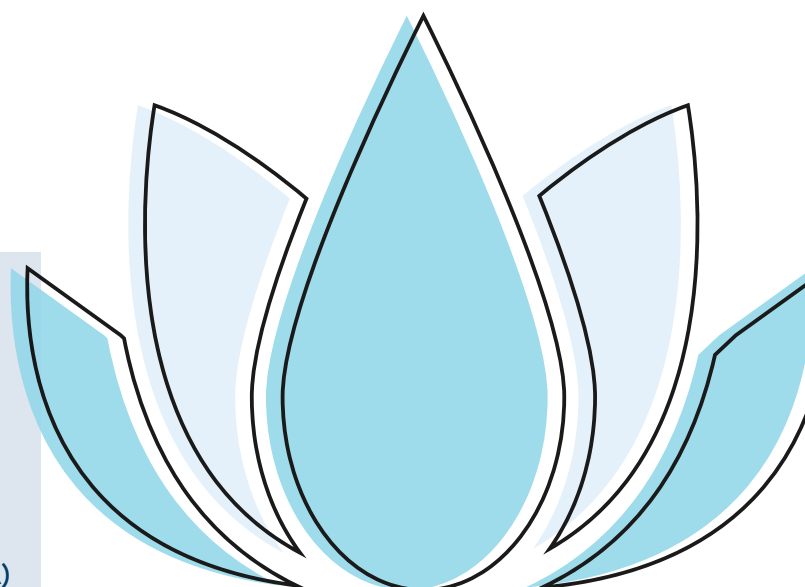
OIE supports students through points where their ethnicities, genders, (dis)abilities, ages, sexual orientations, religions, and other identities begin or intersect, and is especially intentional about supporting and reaffirming students in our community specifically identifying (generally or in part) as African/Black, Latiné, Indigenous, Asian (ALIA), and/or Multiracial as not only the integral stakeholders who they are, but also as essential shapers of our campus's short- and long-term vision.

QUEER RESOURCE CENTER

See the next page for more information about our Queer Resource Center and the programming and support they offer for LGBTQIA+ students!

OIE identity-based student clubs include:

- Asian Culture Club (ACC)
- Black Student Union (BSU)
- Indigenous Student Association (ISA)
- Latinx/é Student Collective (LSC)
- World Wide Club (WWC)
- Southwest Asian and North African Alliance (SWANAA)



Student Well-Being & More.

Wellness

Location: Vining C

- A space for nurturing & education
- Safer sex supplies & education
- Monthly movement classes such as yoga & pilates
- Programs on self-care, resilience, anxiety reduction, harm reduction, substance abuse prevention, healthy relationships, and more!

Health Center

Location: Murden

The Health Center is staffed by one full-time registered nurse, a part-time registered nurse, and the student crew. An M.D. provides medical supervision. Services provided include healthcare for sickness or injury, referrals—if needed—to other medical practitioners, over-the-counter medications, health education, contraceptives, and STI testing.

Counseling Center

Location: Murden

The Counseling Center offers confidential, short-term individual and couples counseling with licensed social workers and professional counselors, same-day services for students dealing with a crisis or urgent need, consultation to campus groups, and referrals to community providers and off-campus support groups. All services are provided free of charge to enrolled students during the academic year, with emergency support available during weekends and breaks.

Queer Resource Center

Location: Sunderland 007

The Queer Resource Center (QRC) is committed to building a campus culture at Warren Wilson that honors the dignity and value of people of all genders and sexual orientations. The QRC is a safe space for Queer students to be in community with each other.

- Zine collection
- Resource library
- Queer Assembly meetings
- Gender & Sexuality Workshops
- LGBTQIA+ History Month and GAYpril programming
- Drag performances
- Lavender Graduation celebration
- An inclusive center for lounging, engaging in discussions, and watching Queer cinema!

Residence Life

Dodge House, Lower Level

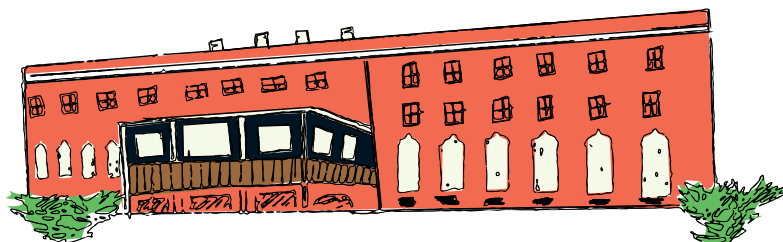
The Office of Residence Life supports your on-campus living experience. Our Resident Assistants (RAs) are upper-level students who live in-residence, providing support, programming, and events. Programs and events are designed to help you get to know others on your floor and in your building and to gain new skills and perspectives.



Housing Overview.

Learn about where you'll live!

These buildings are for First Year students.



Sunderland Hall

STATS

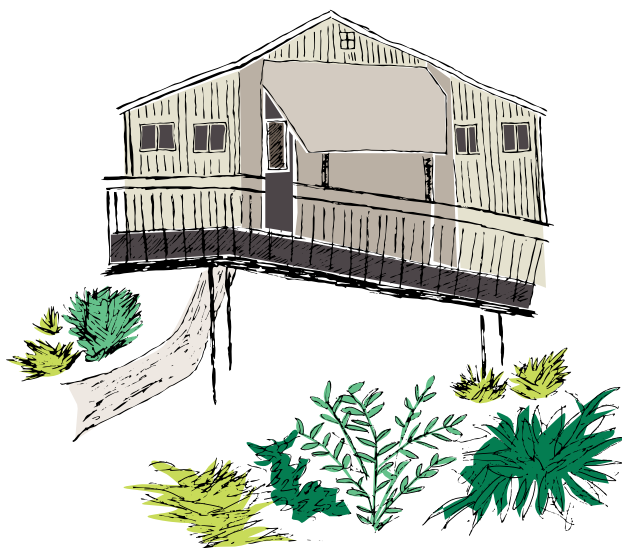
- Community: 134 students, co-ed
- Support Team: 1 Area Coordinator & 3 RAs
- Standard Room Size: 10' by 15'

Sunderland is located in the heart of Central Campus on a hill overlooking the main classroom facilities, the Library, and Gladfelter Student Center. Warren Wilson's largest residence hall, it is a three-story brick structure and is the closest of all the student residences to important College facilities. All floors are co-ed. Sunderland's kitchen and laundry facilities are located in the basement, and there are community bathrooms on each hall. Rooms feature twin beds, desks, and air conditioning during warmer months.

Vining A

STATS

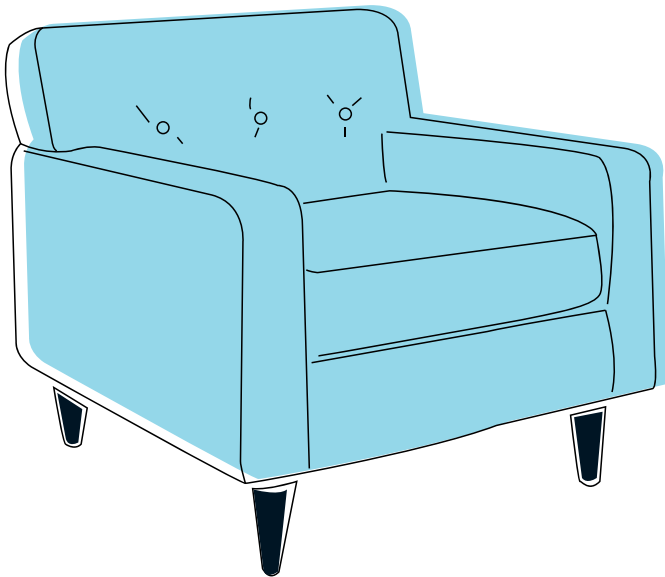
- Community: 50 students, co-ed
- Support Team: 1 RA
- Standard Room Size: 12' by 16'



Located in Central Campus, the Vining complex is made up of three buildings. Of the two residence buildings, Vining A is dedicated to first-year housing, and the other houses upper-level students. The third building hosts a shared kitchen, community lounge, and the Wellness Office.

Themed Housing.

We encourage you to explore particular interests with our themed housing floors. Themed housing allows students with similar interests to live in community. You can indicate your preference for themed housing when you complete the online Housing Application.



First Year Alliance Floor

This community is an intentional and supportive space for all gender and sexual identities including (but not limited to) lesbian, gay, bisexual, transgender, queer, intersex, asexual, and nonbinary. Residents can engage in honest dialogue about gender, gender identity, sexuality, and interpersonal relationships as a means to self-awareness. This community collaborates with the Queer Resource Center on program development, community education, and other activities. The Alliance Floor is equipped with two gender-neutral bathrooms, a common space, a small kitchenette, and 24 bedrooms.

Healthy Lifestyles

This community is for first year students who are dedicated to or are looking to become engaged in a wellness lifestyle. The Healthy Lifestyles themed community is designed to introduce students to a wide range of wellness topics such as substance-free living, physical wellness, emotional wellness, and the spirit-mind-body connection. Residents of this community sign a floor agreement stating that they will not have substances in their rooms at any time, nor will they enter the floor under the influence of any substances.

Transfer & Gap Year (ANTC)

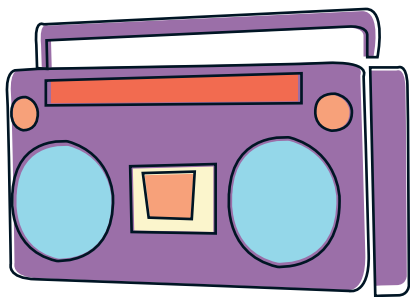
Each year, more than 10% of incoming Warren Wilson students have participated in a gap year. Living with other students who have had similar life-changing experiences helps residents of this community develop friendships and engage in their Warren Wilson experience through the context of their gap year. New transfer students live in ANTC as well, which gives them the opportunity to increase their sense of belonging and community through a shared living experience.

International Students (Schafer A)

Schafer A is also known as World Wide House. Returning students applied and were chosen to live with incoming international students to make the transition to Warren Wilson a great experience!

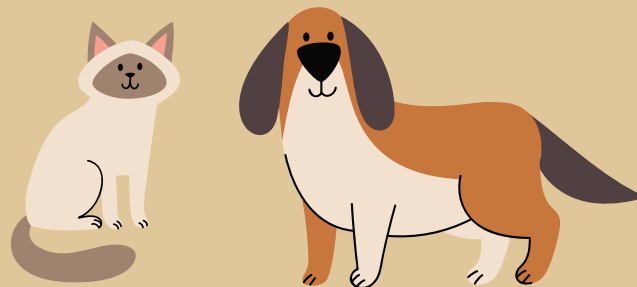
Engage Living & Learning Community (Sutton Hall)

Every Warren Wilson student should have the community and support that they need to thrive. Students dedicated to advocacy for African, Latiné, Indigenous, and Asian (ALIA) descent communities can grow in their advocacy and leadership in the Engage living and learning community in Sutton dorm. If you join Engage, you will work to support and make a difference for ALIA communities on campus, in the greater Asheville area, and in your communities at home.



Renter's Insurance:

We highly recommend that all students cover their belongings with a renter's insurance policy. Some parents may be able to claim their students' belongings while at college on their homeowner's insurance policies as well.



Pet Policy

Warren Wilson College is now pet friendly: you can apply to bring your beloved pet from home to campus with you! When completing your tasks on the New Student webpage (warren-wilson.edu/new-students), you will have the option to submit an application to bring a pet to college with you.

Dogs — \$250 per year registration fee. Dogs must weigh less than 40 pounds.

Cats & Medium-Sized Pets (rabbits, ferrets, etc.) — \$150 per year registration fee.

Small Pets — (turtles, amphibians, etc.) \$50 per year registration fee.

Students cannot purchase, adopt, or rescue a new pet to bring to campus. Pets must have been with the student prior to the time that they are coming to WWC. For questions about the new pet policy and application process, please contact housing@warren-wilson.edu.

Orientation.

Save the Date: August 22–25, 2024

We're excited to welcome you to our community through our Orientation program! Move-In Day is Thursday, August 22nd. Bring your family; we have events planned for them as well! Family Orientation will take place in the afternoon of the 22nd, and there will be evening programming for students!

Orientation Program:

- Settle into your home away from home.
- Learn more about Warren Wilson traditions and culture.
- Review your course registration.
- Meet faculty members who teach First Year Seminar, General Education courses, and Intro to Major classes.
- Connect with your classmates through your First Year Seminar course, optional events, small group inclusion activities, campus tours, work crews, and academic programs.
- Find out how to join clubs, how to utilize the Library, and where to visit for a quick coffee or snack break between classes.
- Get prepared to start the first week of your academic career at Warren Wilson.
- Get all of your questions answered.
- Learn why our Sex, Drugs, and Rockin' Consent session is a favorite of past students.
- Meet new friends, and discover how you fit at Warren Wilson College!

Center for Experiential Learning Orientation:

Monday, August 26 & Tuesday, August 27

- Participate in Service Day—your first Community Engagement hours with a community partner.
- Meet your Work Crew Supervisor and participate in mandatory work training sessions to set you up for success with your new crew.

An Orientation fee of \$400.00 will be charged to your fall bill. Family members are invited to join us for the Orientation program on Thursday, August 22nd. We will provide lunch for family members at Gladfelter Dining Hall!

Orientation is mandatory for all new students.

Let your family know about Family Weekend September 20–21.

More information here: www.warren-wilson.edu/about/events/family-weekend

Pre-Orientation Programs

Students who participate in these programs will move in early on Saturday, August 17.

- Craft Immersion
- Creative Arts
- Engage Living & Learning Community @ Sutton Hall
- Outdoor Lake James Paddling Adventure
- Outdoor Backpacking & Rock Climbing Adventure
- Outdoor Pisgah Forest Camp & Play
- Starting Point Bridge Program
- Working Lands

Applications are open! Priority acceptance is May 31, and applications will remain open until all spots are filled. For more information about our programs and the application website link, visit warren-wilson.edu/new-students

Register here:
wwcpreorientation.com

Visit the New Student webpage at warren-wilson.edu/new-students for more information about Orientation. For questions, contact: Maddie Liberti, Director of First Year Experience, orientation@warren-wilson.edu.

Warren Wilson COLLEGE

Campus Map



Revised August 2022

- BUILDINGS**
- Academic
 - Administration
 - Athletic
 - Campus Facility
 - Student Residence

- PARKING**
- Staff
 - Student
 - Visitor
 - Visitor & Staff
 - Handicap Parking
 - ☎ Emergency Tel.

Items to Bring to College:

- A laptop or tablet
- Comforter or blanket – XL twin sheets
- Pillow
- Shower caddy/basket – *something to carry your shower items to the bathroom*
- Bathing items – *you may want to bring some of the following: toothbrush/toothpaste, mouthwash, floss, shampoo/conditioner, brush, soap, beauty products, lotion, razor, deodorant, sunscreen, contacts, eye care solution, anything else you use*
- Shower shoes
- Towel
- Medication
- Laundry sack
- Laundry detergent / fabric softener
- Clothing for cold and warm weather – *The temperatures in Asheville vary, so pack for cold, warm, rainy, and snowy weather*
- Umbrella/waterproof rain jacket
- Satchel or backpack
- Reusable water bottle and mug
- Decorations
- Power strip with on/off switch – *to provide additional outlets in the room or extend distance to outlet*

Items Not to Bring:

- Extension cords
- Microwave
- Kitchen appliances & coffee pots
- Anything that covers the windows
- Anything that screws into the wall
- Candles, incense & incense holders
- String lights, lava lamps, non-regulation halogen lamps, lamps with multiple arms & plastic shades & oil lamps
- Kerosene heaters, electrical heaters, space heaters
- Air conditioners (window mounted or floor), appliances with open coil elements (ie: toasters, hot plates, toaster ovens) & large refrigerators
- Dog, cat, rabbit, ferret, or other animal unless it is an approved pet (application required), Service Animal, or Emotional Support Animal (medical documentation required)
- Tapestries larger than 4' by 6'
- Flammable items – *butane, fireworks, gas*
- Weapons – *knives, guns, bows, ammunition, etc...*

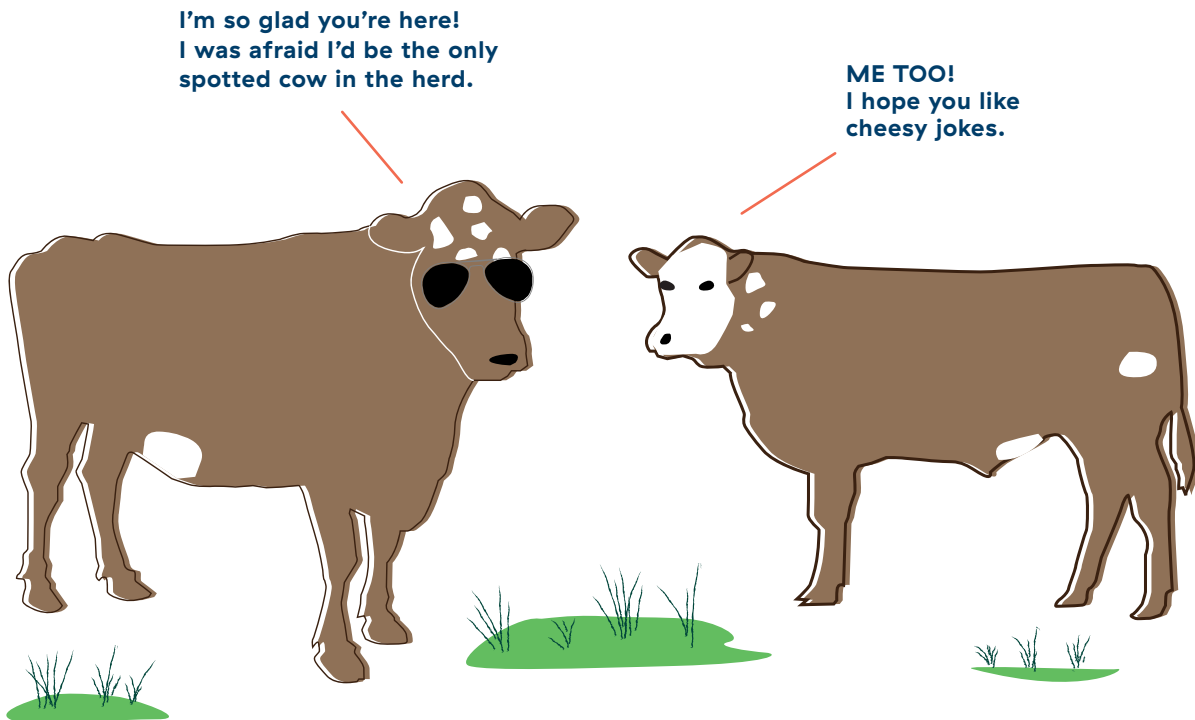
Optional Items to Bring to College:

- Mattress pad
- Iron
- Lint brush
- Hand towels
- Robe
- Mini Fridge – *a communal fridge and microwave are provided in each building if you don't want to bring your own*
- Dishware – *mug, bowl, plate, utensils*
- Desk supplies – *stapler, highlighter, index cards, post its, tape, paper clips, calculator, binders, folders, notebooks, white out, rubber bands, ruler, scissors*
- Desk lamp
- Journal
- Alarm clock
- Bulletin board or whiteboard
- Rug
- Fan
- Sewing kit
- Bike, helmet, and lock
- Outdoor equipment – *Outdoor Programs Crew offers a variety of trips, but if you think you would like to go on your own trips often and have equipment, bring it*
- Snacks
- Additional storage bins – *you can put them under the bed or in the closet*
- First aid kit

Living at Warren Wilson.

Show Me My Roommate

Your housing assignment will become available on myWWC beginning **July 8th** if you completed the housing application by the June 15th deadline. You'll be able to see not only which building you're living in, but also who your roommate is, which means you two can start making plans right away.



Sodexo Dining Services.

Your dining experience is more than just great food. It's a community experience centered on fresh and local ingredients, healthy foods, and a shared sense of environmental and social responsibility. Sodexo Dining Services has been a partner of the College for over 20 years and is an industry leader in sustainability. Sodexo operates three locations on campus that are all centered around our campus farm-to-table program, locally sourced ingredients, and compost and recycling programs.

Gladfelter Dining Hall

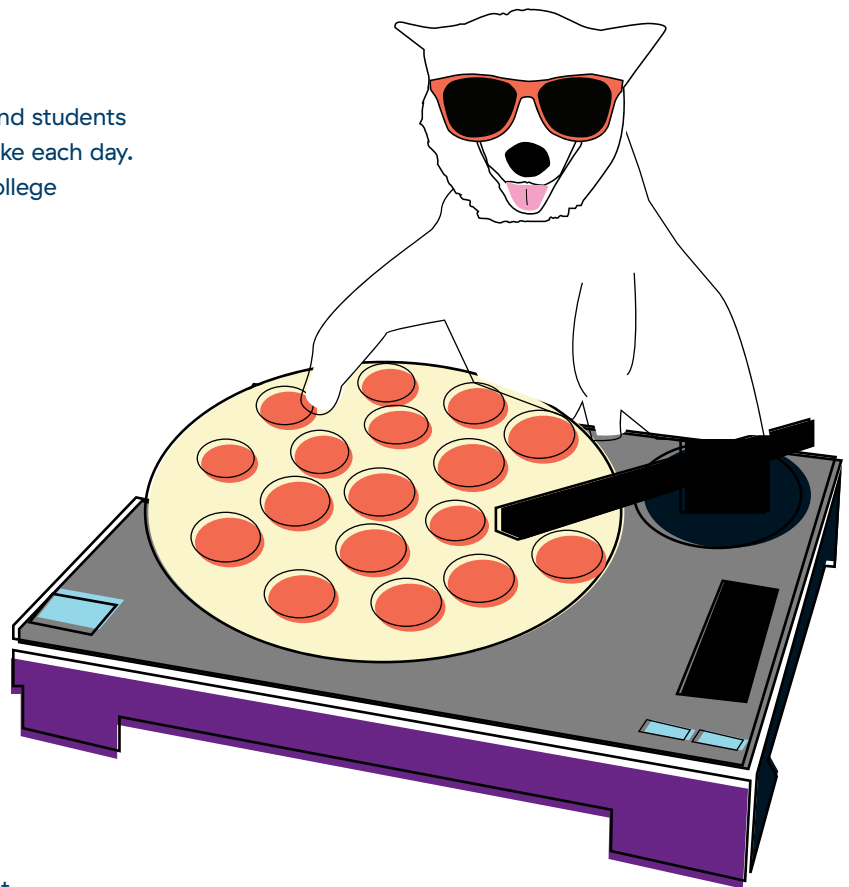
Gladfelter is the main dining hall on campus, and students are able to visit as many times as they would like each day. Gladfelter frequently features food from the College Farm and Garden.

Cowpie Café

An all vegetarian and mostly vegan and gluten-free café, the Cowpie was created in 2000 as a result of a student-led initiative. Cowpie focuses on serving as much Warren Wilson Garden produce as possible, as well as other local items such as Smiling Hara Tempeh and Miso Masters Miso. Breads are baked fresh in-house, and the café features homemade kombucha, seitan, hot sauce, desserts, and salad dressings.

The Owl's Nest

The Owl's Nest is a full-service coffee shop and café that was built in 2012. The Owl's Nest offers a wide variety of coffee drinks, smoothies, organic Guayaki Mate, pastries, paninis, bottled drinks, and grab and go snacks. Bulk locally-roasted coffee, locally made GMO-Free Roots Hummus, local apple cider, and other items are available for purchase here.



Food & Housing Costs

All students living on campus are required to have a meal plan

PLAN	COST	GLADFELTER	COWPIE	HOOT LOOT
Room with PREMIUM Meal Plan	\$6,725/ semester	Unlimited Meals	1 Scan/ Meal	\$240 Loot
Room with PLUS Meal Plan	\$6,615/ semester	Unlimited Meals	1 Scan/ Meal	\$130 Loot
Room with OPEN DINING Meal Plan	\$6,525/ semester	Unlimited Meals	1 Scan/ Meal	\$40 Loot

All food and housing costs assume double occupancy. The single occupancy charge is \$1,000.00 per semester.

HOOT LOOT = For use in Gladfelter, Owl's Nest, or Cowpie. Perfect for guests and morning coffee runs.

The meal plan I choose is...

(Milepost One or NC Free recipient? Your estimated charges were based on double-occupancy and our Room with an OPEN DINING Meal Plan.)

Remember, you'll officially select your plan through our online Housing Application. You can find this application at warren-wilson.edu/new-students

Non-residential meal plans are available through dining services.

Information may be found online at: warrenwilson.sodexomyway.com/my-meal-plan/



Parking on Campus

All vehicles on campus must have a parking permit. To register for a student parking permit, you can find the application on the Public Safety section of the myWWC portal under Campus Life.

ASHEVILLE

Know Your Town

NORTH ASHEVILLE

DOWNTOWN ASHEVILLE

SOUTH SLOPE

RIVER ARTS DISTRICT

BILTMORE

WEST ASHEVILLE

WWC

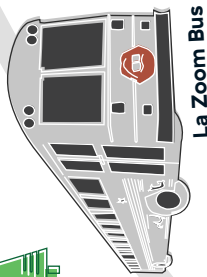
THIS WAY

WNC Nature CENTER

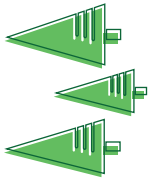
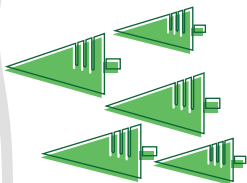
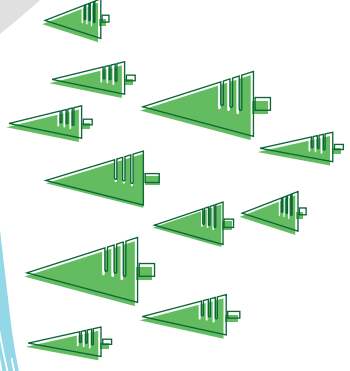
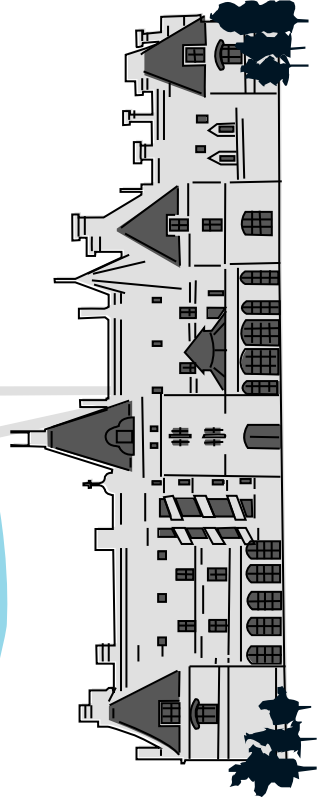
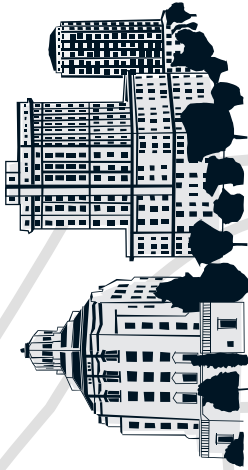
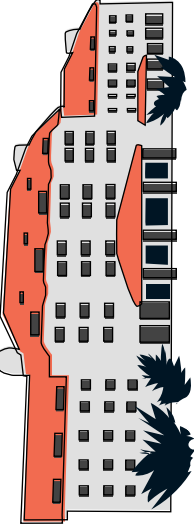
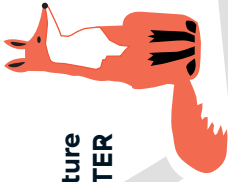
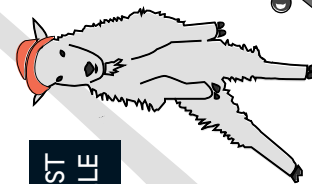
Swannanoa River

French Broad River

French Broad River



La Zoom Bus



Your Guide to Greater Asheville.

Here are some of our favorite spots.

EAT

Breakfast

All Day Darling – American Breakfast & Lunch \$\$
Biscuit Head – Breakfast & Brunch \$\$
HOLE – Coffee, Tea & Donuts \$
Sunny Point Café – Breakfast & Brunch \$\$
Vortex Doughnuts – Coffee, Tea & Donuts \$

Lunch & Dinner

12 Bones Smokehouse – Barbeque \$\$
Asheville Pizza & Brewing Co. – Pizza, Burgers & Movies \$\$
Benne on Eagle – Southern Afro-Appalachian \$\$
Buxton Hall – Barbeque \$\$
Cecilia's Kitchen+ – French Latina cafe \$
Chai Pani+ – Indian Street Food \$\$
Corner Kitchen – American Traditional \$\$
Cousin's Cuban Cafe+ – Authentic Cuban cuisine and coffee \$\$
Cúrate – Spanish Tapas \$\$\$
Dilbar+ – Indian Street Food \$
Haywood Lounge+ – Best wings \$
Island Pan+ – Jamaican Caribbean \$\$
Itto Ramen – Noodles & Small Plates \$\$
Laughing Seed – International vegetarian \$\$
Little Bee Thai+ – Traditional Thai \$\$
Little Chango+ – Casual hispanic kitchen \$
Mamacita's Taqueria – Tacos \$
Mela Indian Restaurant+ – North & South Indian cuisine \$\$
Neng Jr's+ – Filipinx cuisine \$
Rosetta's – Vegan, Vegetarian & Kombucha Bar \$
Smoky Park Supper Club – Farm to Table \$\$
Stonebowl+ – Authentic Korean \$\$
Wasabi+ – Japanese & Sushi Bar \$\$
White Duck Taco Shop – Creative Tacos \$

Coffee, Tea & Sweets

Dobra Tea – Tea & Snacks \$
French Broad Chocolate Lounge – Sweet Treats \$\$
Grind AVL+ – More Than Just Coffee \$
Jeremiah's Italian Ice – Frozen treats \$
Morsel Cookie Co – Gourmet cookies \$
Pop Bubble Tea+ – Authentic boba \$
Ultimate Ice Cream* – Frozen Desserts \$

SHOP

Antique Tobacco Barn – Cool Antiques
East Fork* – Ceramics & Pottery
Firestorm Books & Coffee – Bookstore

Harvest Records – Music & Vinyl
Horse + Hero – Art Gallery Featuring WWC Alums Woolly Press*
Liberty Bicycles* – Cycling
Malaprop's – Bookstore & Cafe
Morgan's Comics – Nerd Sanctuary
Noir Collective AVL+ – Boutique & gallery
Second Gear* – Second Hand Outdoor Gear
Woolworth Walk – Art & Craft Gallery

ENTERTAINMENT

Asheville Pinball Museum – Museum & Arcade
Breakout Games – Escape Rooms
The Carolina Cinemark – Movie Theatre
Fine Arts Theatre – Independent Movie Theatre
The Grey Eagle – Music Venue & Taqueria
LaZoom – Comedy Tours & More
Montford Park Players – Theater in the Park
The Orange Peel – Music Venue
River Arts District Studios & Galleries – Local Art & Craft
Clayspace Co-op*
Odyssey Clayworks*
Wedge Studios

OUTDOORS & WELLNESS

Asheville Yoga Center – Wellness
The Blue Ridge Parkway – Hiking & Recreation
Carrier Park – Trails, Velodrome & Dog Park
Climbmax – Climbing & Outdoor Gear
French Broad Outfitters* – Watersport Rentals & Guided Trips
Hickory Nut Gap Farm* – CSA, Farm Tours & Country Store
The North Carolina Arboretum – Gardens & Trails
WNC Nature Center – Animal Sanctuary & Park
Zen Tubing – Tubing

CULTURE

Biltmore Estate – America's Largest Home
Black Mountain College Museum – Art & History
Center for Craft – Art Gallery & Creative Space
Folk Arts Center – Museum of Appalachian Arts & Crafts
The Grove Park Inn – Historic Hotel, Spa & Sunset Terrace
Wortham Center for the Performing Arts
– Home of Asheville Symphony
YMI Cultural Center – African-American Cultural Venue & Gallery

*Alumni owned and/or operated!

+ ALIA (African/Latine/Indigenous/Asian) owned and/or operated

Overview of Required Forms.

1. HOUSING APPLICATION

Required for campus housing

You will complete this application online at warren-wilson.edu/new-students only if you intend to live on campus. Please select your meal plan here as well.

PRIORITY DEADLINE: JUNE 15th

2. STUDENT HEALTH RECORD & IMMUNIZATION RECORD

Required for campus housing

Per state law, all students must submit the Student Health Form and the Immunization Record. Students who have not submitted a Health Record before the end of week one will have their registration dropped and will not be able to continue at Warren Wilson College. You may access these forms here: warren-wilson.edu/new-students

Completed forms include:

- Personal and Family History
- Immunization Record (signature of provider required)

DEADLINE: AUGUST 1st



Planning Ahead.

2024–2025 Residence Hall Calendar



AUGUST 22–25, 2024 • Mandatory
New Student Orientation & move-in

OCTOBER 12, 2024 • 1:00pm
Fall Break! Residence halls close

OCTOBER 20, 2024 • 1:00pm
Residence halls reopen

DECEMBER 18, 2024 • 1:00pm
Residence halls close for
the semester

JANUARY 19, 2025 • 1:00pm
Returning student check-in

MARCH 8, 2025 • 1:00pm
Spring Break! Residence
halls close

MARCH 16, 2025 • 1:00pm
Residence halls re-open

MAY 8, 2025 • 1:00pm
Residence halls close for
the semester

828. 771. 3800
studentlife@warren-wilson.edu



We know. You haven't even gotten here yet, and already we're telling you when you can head back home. But we know that these dates are important in helping you and your family plan. Share this calendar to remind your loved ones of when they'll see your smiling face!

Still have questions? We're just a phone call away!

Warren Wilson College Student Life
828.771.3800
studentlife@warren-wilson.edu

A house is no home unless it contains food and fire for the mind as well as for the body.
– Margaret Fuller



Warren Wilson
COLLEGE